

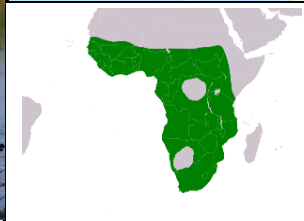
Cape Barren Goose
Cereopsis novaehollandiae



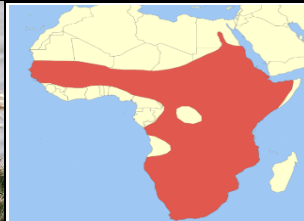
Magpie Goose
Anseranas semipalmata



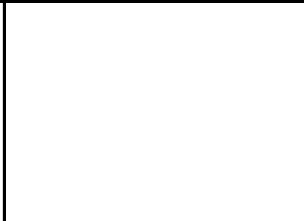
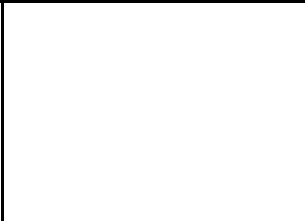
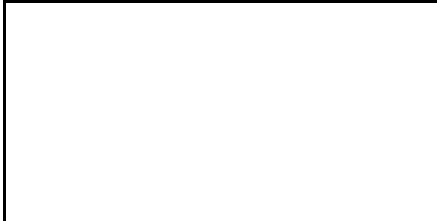
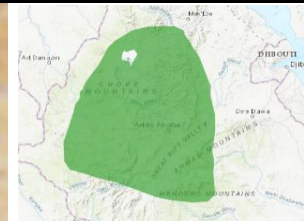
Spur-wing Goose
Plectropterus gambensis



Egyptian Goose
Alopochen aegyptiaca



Blue-winged Goose
Cyanochen cyanoptera



M/F Similar Bill is black @ 2.5 in with a pale yellow/green cere covering over half of it	Length
	Weight
	plumage is mostly pale grey with a slight brown tint. The head is small in the body with a pale whitish patch on the forehead
M/F Similar Male is larger in Size In its own category Endemic to Australia	Length
	Weight
	A black neck with a white body. The crown of the head is pronounced increases in size with a males age. Bills and legs are orange. Feet partially webbed
2 Subspecies Large Species In its own category Males differ from females having a larger red facial patch	Length
	Weight
	mainly black, with a white face and large white wing patches. The pinkish red in colour. Males also have a knob at the base of the upper
M/F similar a dark neck ring and black eye patch	Length
	Weight
	Male and Female are identical in plumage but the males are usually. Mostly shades of tan and brown. Big white patches on black wings; plumage tone. Some birds greyer and others browner
M/F look Similar Black Bill and Legs	Length
	Weight
	stocky grey-brown bird with a paler head and upper neck. Standing bird and dirty white, sometimes showing blue along the edge of the wing. In pale blue forewing with a green speculum
	Length
	Weight

30-39 in

8.2-11.5 lbs

n proportion to

28-36 in

4.4-6.0 lbs

ounced and
feet are only

30-45 in

8.8-15.0 lbs

long legs are
oper mandible

25-29 in

6.6-14.3 lbs

ually larger
s They vary in
r

28 in

2.8-5.2 lbs

look dull, gray
flight, shows a
